



Forest Service  
U.S. DEPARTMENT OF AGRICULTURE

## National Forests in North Carolina

### U.S. Forest Service News Release

Media Contact: Lisa Jennings

Contact Title: Recreation & Trails Program Manager

(828) 337-1359

[lisa.n.jennings@usda.gov](mailto:lisa.n.jennings@usda.gov)

[www.fs.usda.gov/nfsnc](http://www.fs.usda.gov/nfsnc)

### Partnership announces plans to improve parking/river access at Wilson Creek

*U.S. Forest Service and partners request public input to help build Action Plan*

[Para esta información en español haga clic aquí](#)

**Nebo, NC, March 7, 2024**— A diverse partnership is leading an effort to create a more sustainable future for Wilson Creek. **The Wilson Creek Action Plan** will provide a vision for outdoor recreation infrastructure development along Wilson Creek and present recommendations for parking areas, river accesses, and support facilities such as restrooms and picnic areas.

Over the past three years, the community has come together to support better stewardship of the Wild and Scenic River located in Pisgah National Forest in Caldwell County, North Carolina. As part of this partnership, the U.S. Forest Service is moving forward with plans to improve parking and river access.

The U.S. Forest Service is requesting public input to ensure the views of the community are represented in future developments. Public input is critical in ensuring that these recommendations will meet the current needs of the community and protect the Creek for future generations.

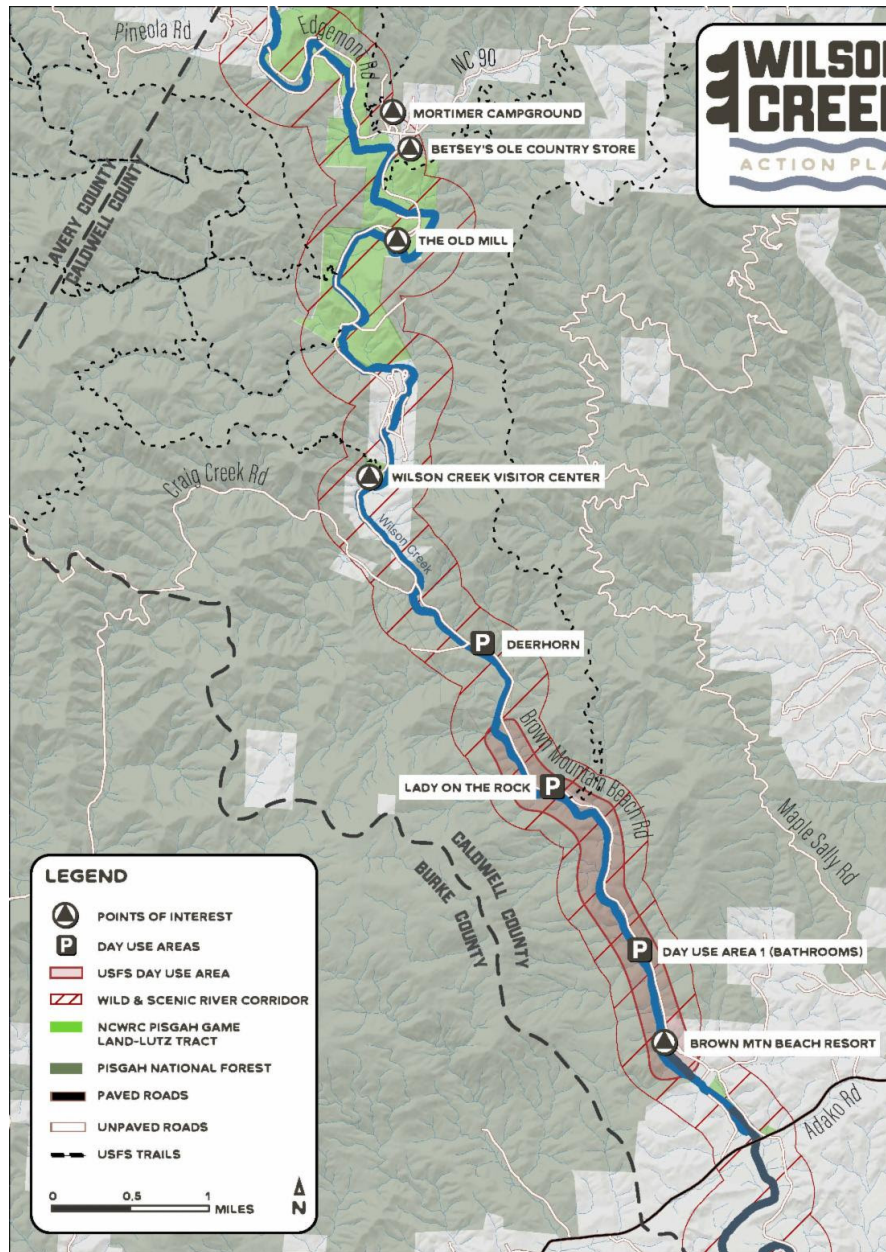
“We need to hear from our local communities and users to build better solutions to the issues that we have at Wilson Creek,” says Lisa Jennings, Recreation and Trails Program Manager for the Grandfather Ranger District. “Over the next several months we will be collecting feedback, working with designers and planners, and proposing options for improvements. We want to know what changes you would like to see.”

#### Share your ideas!

Visit [www.g5trailcollective.org/wilsoncreek](http://www.g5trailcollective.org/wilsoncreek) and fill out the feedback survey.

Website and feedback survey also available in Spanish.

Visite [www.g5trailcollective.org/wilsoncreek](http://www.g5trailcollective.org/wilsoncreek) y complete la encuesta de comentarios



Map of the Wilson Creek Action Plan area.

Wilson Creek was designated as a National Wild and Scenic River by Congress in 2000. Below Grandfather Mountain, it flows 23 miles through mostly protected forest lands before emptying into the Pisgah River in Caldwell County. The Creek's remarkable features include whitewater rapids, world-class fishing, and large boulders surrounded by sandy beaches popular in the summer for swimming and sunbathing. As recreational use of Forest sites, use has increased significantly in the past 5 years, leading to issues with parking and trail planning. This planning effort builds on goals within the newly adopted Nantahala-Pisgah Forest Management Plan and involves collaboration with community partners.